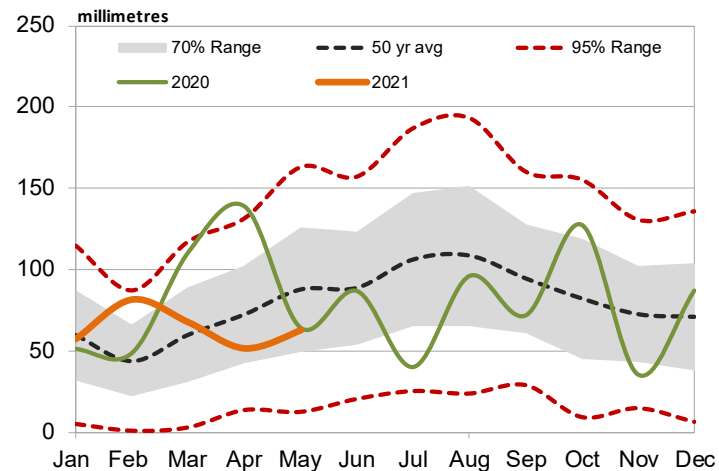
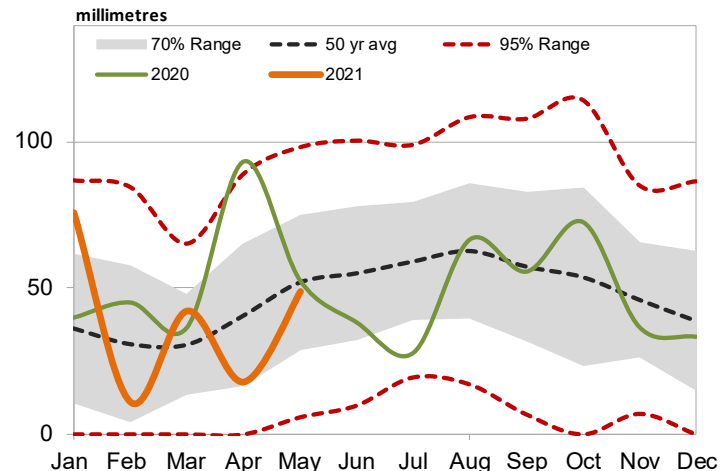


### Tasmanian Rainfall (50 years) Zone 1



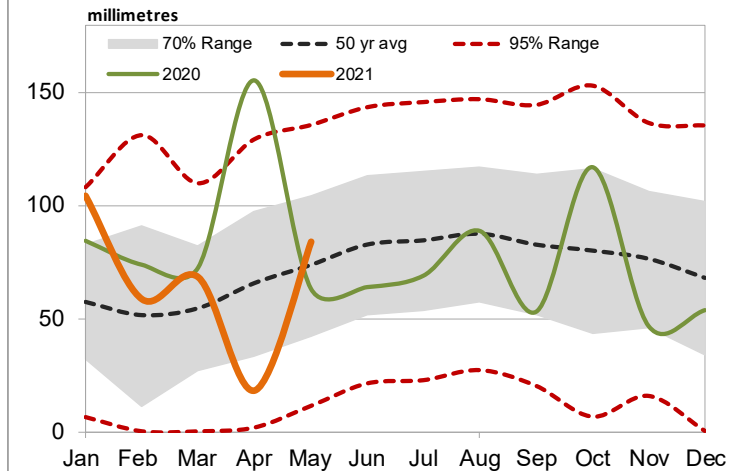
Source: BOM, Mecardo

### Western Vic Rainfall (50 years) Zone 2



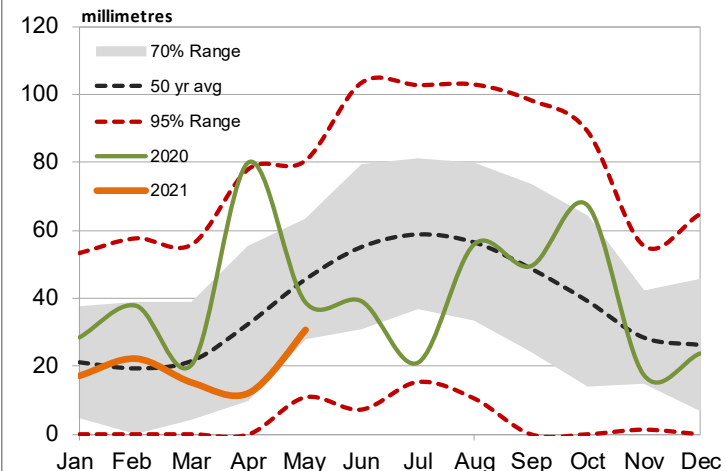
Source: BOM, Mecardo

### Eastern Vic Rainfall (50 years) Zone 3



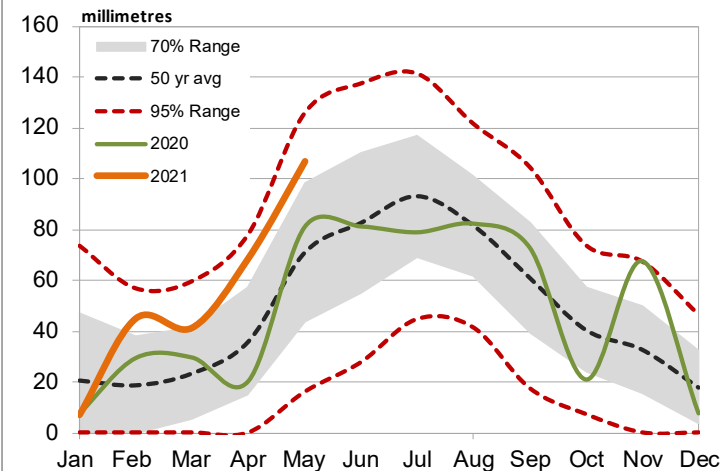
Source: BOM, Mecardo

### Southern SA Rainfall (50 years) Zone 4



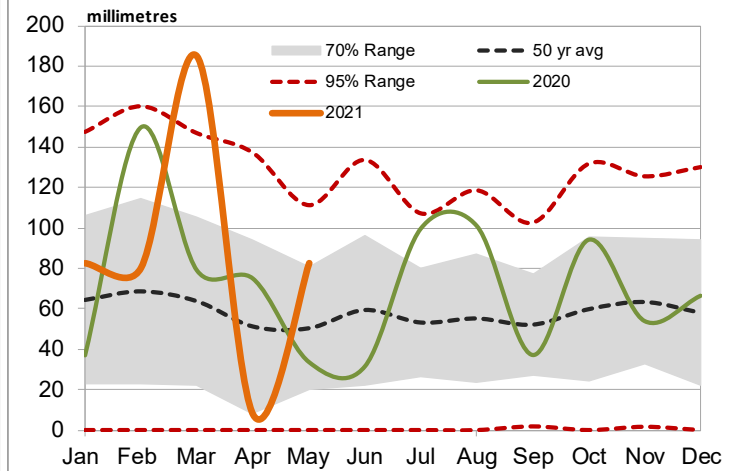
Source: BOM, Mecardo

### Southern WA Rainfall (50 years) Zone 5



Source: BOM, Mecardo

### Southern NSW Rainfall (50 years) Zone 6

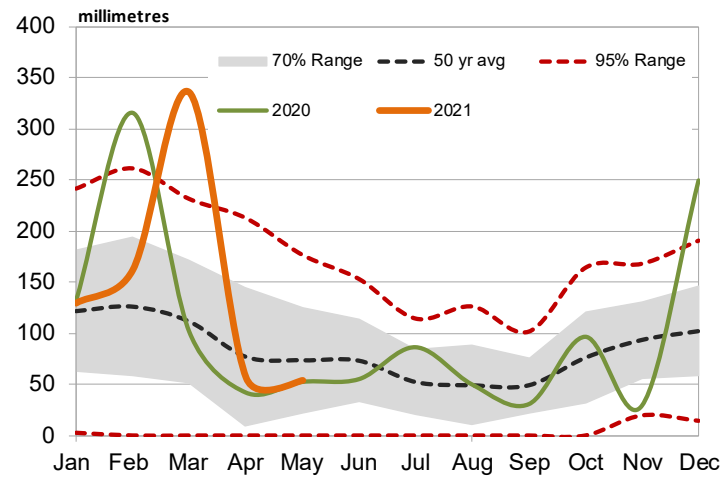


Source: BOM, Mecardo

COMMERCIAL IN CONFIDENCE: This information is to assist in your marketing decisions. It contains a range of data and views on the current agricultural commodity markets. It is not intended to constitute advice for a specific purpose. Before taking any action in relation to information contained within this report, you should seek advice from a qualified professional. The information is obtained from a variety of sources and AG CONCEPTS will not be held liable for any loss or damage whatsoever that may arise from the use of information or for any error or mis-statement contained in this report.

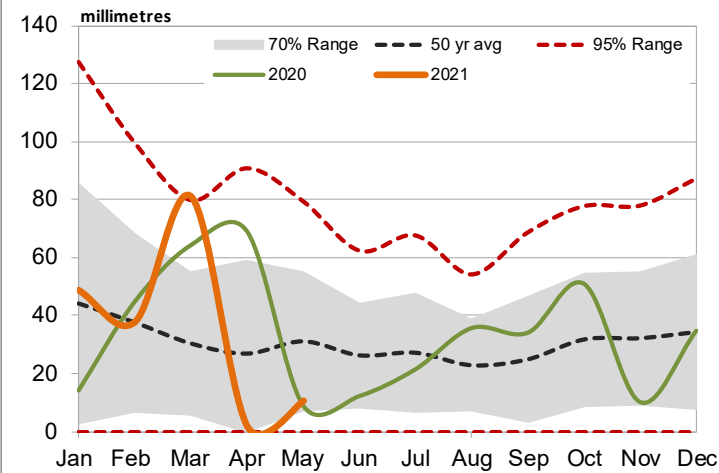


**Northern NSW Rainfall (50 years) Zone 7**



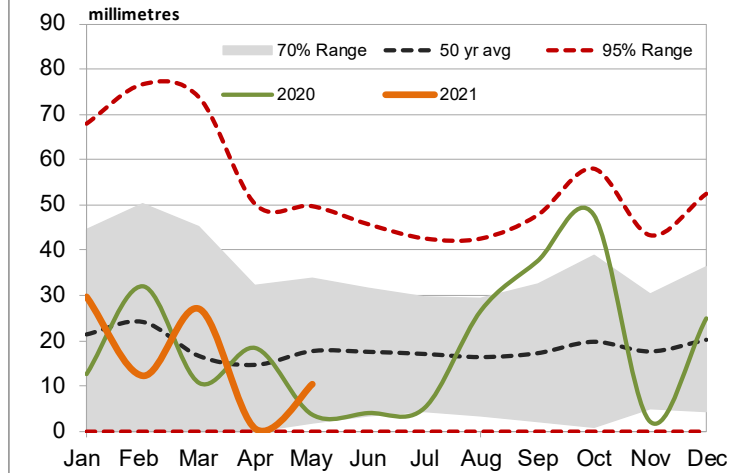
Source: BOM, Mecardo

**Western NSW Rainfall (50 years) Zone 8**



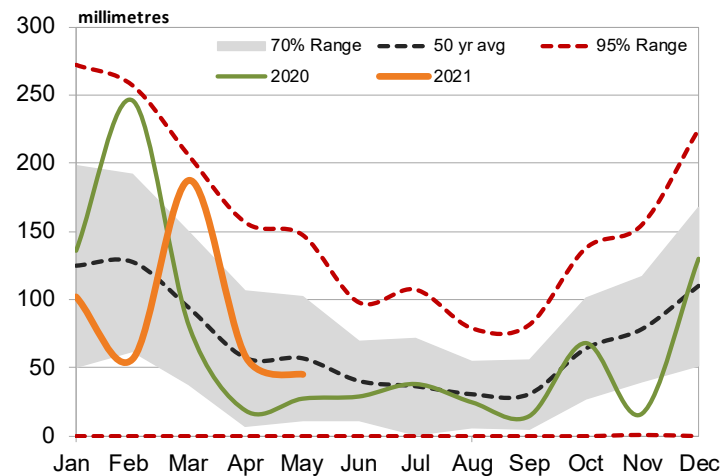
Source: BOM, Mecardo

**Northern SA Rainfall (50 years) Zone 9**



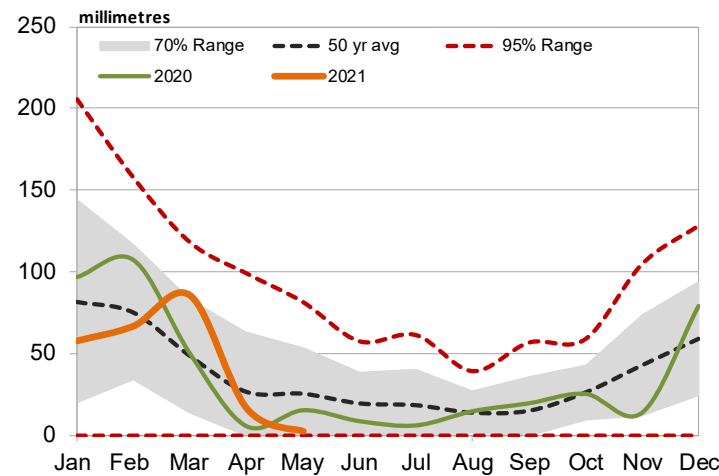
Source: BOM, Mecardo

**Eastern QLD Rainfall (50 years) Zone 11**



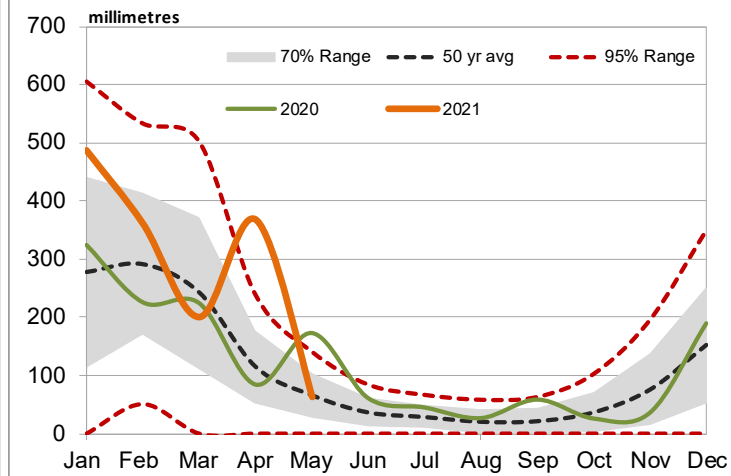
Source: BOM, Mecardo

**Western QLD Rainfall (50 years) Zone 12**



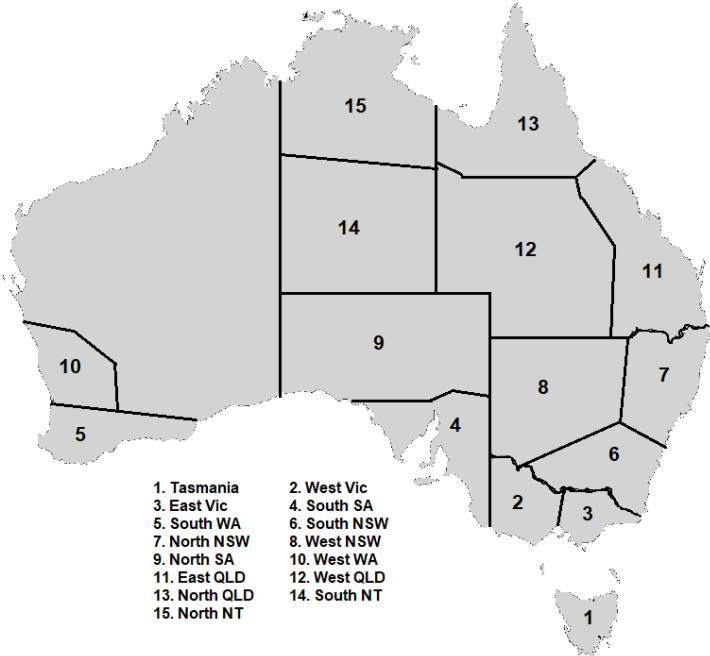
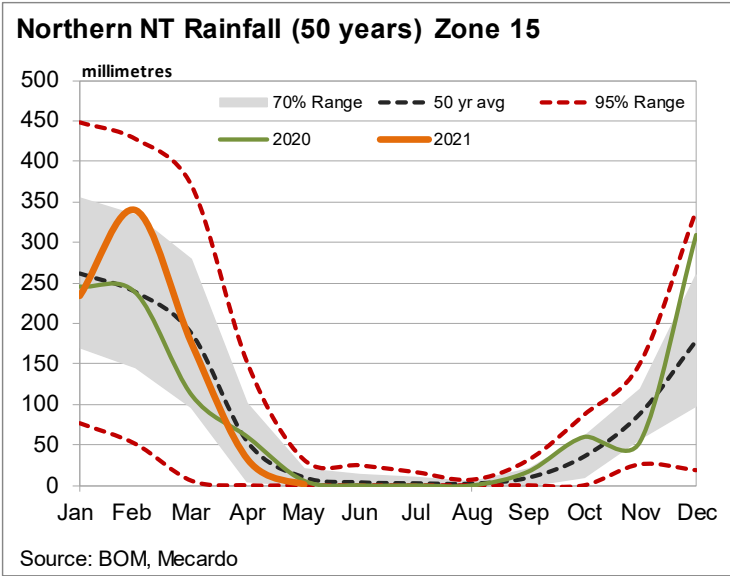
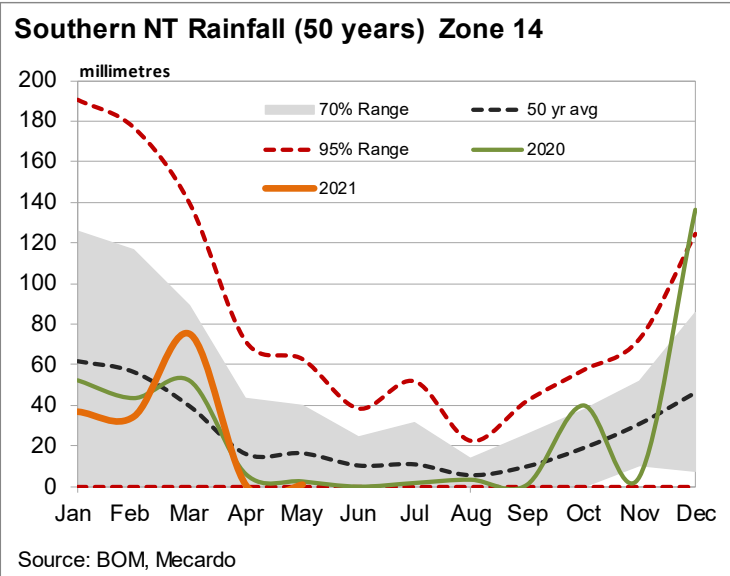
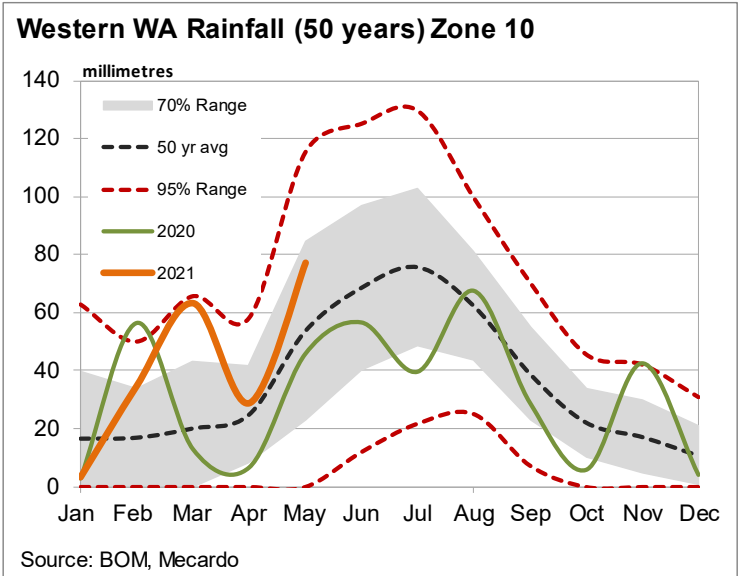
Source: BOM, Mecardo

**Northern QLD Rainfall (50 years) Zone 13**



Source: BOM, Mecardo

COMMERCIAL IN CONFIDENCE: This information is to assist in your marketing decisions. It contains a range of data and views on the current agricultural commodity markets. It is not intended to constitute advice for a specific purpose. Before taking any action in relation to information contained within this report, you should seek advice from a qualified professional. The information is obtained from a variety of sources and AG CONCEPTS will not be held liable for any loss or damage whatsoever that may arise from the use of information or for any error or mis-statement contained in this report.



Charts displayed highlights:

- Current season’s monthly rainfall trend (orange line)
- Last season’s monthly rainfall trend (green line)
- Average monthly trend over 50 years (black dotted line)
- 70% range in monthly rainfall over last 50 years (grey shaded zone)
- 95% range (red dotted line)
- Rainfall within the 70% range would be considered reflective of a relatively normal seasonal pattern
- Movements outside the grey 70% range would suggest a drier (below range) or wetter (above range) than normal season
- Movements outside the 95% range would be considered extreme

COMMERCIAL IN CONFIDENCE: This information is to assist in your marketing decisions. It contains a range of data and views on the current agricultural commodity markets. It is not intended to constitute advice for a specific purpose. Before taking any action in relation to information contained within this report, you should seek advice from a qualified professional. The information is obtained from a variety of sources and AG CONCEPTS will not be held liable for any loss or damage whatsoever that may arise from the use of information or for any error or mis-statement contained in this report.